

DAILY RESEARCH, 7 AGUSTUS 2020

PT PROFINDO SEKURITAS INDONESIA

**GD PERMATA KUNINGAN LT 19
JL KUNINGAN MULIA KAV 9C GUNTUR SETIABUDI JAKARTA SELATAN 12980**

TELP +62 21 8378 0888

EMAIL : CUSTOMERSERVICE@PROFINDO.COM

WWW.PROFINDO.COM | PROCLICK.PROFINDO.COM

MARKET MOVERS



Bursa saham AS ditutup menguat setelah didorong stimulus Pemerintah AS fiscal yang akan disetujui oleh Kongres dan juga data Jobsless Claims AS yg lebih rendah dari estimasi. **DOW +0.68%, S&P +0.64%, NASDAQ +1.00%**

Bursa saham Eropa ditutup melemah setelah data Ekonomi Inggris yang menunjukkan perlambatan pemulihan Ekonomi. **Indeks DAX -0.54%, FTSE -1.27%, CAC -0.98%**

Bursa Saham Asia dibuka variative dimana para investor masih mencerna lebih dalam lagi atas kebijakan Stimulus baru Pemerintah AS. **Hang Seng -0.69%, KOSPI +0.26%, Nikkei -0.39%**

Harga minyak mentah dunia menguat tipis ditengah masih menurunnya permintaan global. Harga emas ditutup menguat tipis setelah rencana kebijakan Stimulus baru Pemerintah AS dan menurunnya jobless claims AS yang lebih rendah dari perkiraan sebesar 1.19 juta dibandingkan consensus 1.41 juta. **WTI +0.27%, Brent Oil +0.07%, Gold +0.35%.**

IHSG pada perdagangan hari ini diperkirakan akan **BEARISH** dengan Range pergerakan **5059-5187** dengan saham-saham yang dapat diperhatikan : **MEDC GIAA BRPT RALS PTBA ANTM**

MARET DATA

AMERIKA

DOW 30	27,386.98	+185.46	+0.68%
S&P 500	3,349.16	+21.39	+0.64%
NASDAQ	11,108.07	+109.67	+1.00%

EUROPE

DAX	12,591.68	-68.57	-0.54%
FTSE 100	6,026.94	-77.78	-1.27%
CAC 40	4,885.13	-48.21	-0.98%

ASIA

SHANGHAI	3,385.66	-0.80	-0.02%
HANGSENG	24,930.58	-171.96	-0.69%
SET	1,333.22	-4.13	-0.31%
KOSPI	2,348.75	+6.14	+0.26%
JCI	5,178.27	+51.22	+1.00%
NIKKEI	22,330.50	-87.65	-0.39%
ASX	6,014.60	-27.60	-0.46%

COMMODITIES

GOLD	2,065.60	+7.20	+0.35%
WTI OIL	42.06	+0.11	+0.26%
BRENT OIL	45.15	+0.03	+0.07%
COAL	52.10	-1.30	-2.43%
PALM OIL	2895	+45	+1.58%
TINS	17,920.00	+87.50	+0.49%
NICKEL	14,512.50	+62.50	+0.43%

EVENT & ECONOMIC CALENDER

ECONOMIC CALENDER :

INDONESIA

30820	MARKIT PMI MANUFACTURING (JUL) INFLATION RATE (MoM) JUL TOURIST ARRIVAL (YoY) JUN
50820	LOAN GROWTH (YoY) JUN GDP GROWTH (YoY) JUL BUSSINES CONFIDENCES Q2
60820	CONSUMER CONFIDENCE (JUL)

GLOBAL

030820	JPN GDP Q1 (QoQ) GERMAN MARKIT PMI MANUFACTURING (JUL) BRITISH MARKIT PMI MANUFACTURING (JUL) FRANCE MARKIT PMI MANUFACTURING (JUL) EUROPE MARKIT PMI MANUFACTURING (JUL) US MARKIT PMI MANUFACTURING (JUL)
040820	KOREA INFLATION RATE (MoM) JUL JAPAN CORE CPI (JUL) AUSTRALIA TRADE BALANCE (JUN) AUSTRALIA RETAIL SALES (JUN) EUROPE PPI (MoM) JUN
050820	US API CRUDE OIL STOCK CHANGE HONG KONG MARKIT PMI (JUL) EUROPE RETAIL SALES (MoM) JUN BANK OF JAPAN GOV KURODA SPECH US TRADE BALANCE (JUN)
060820	KOREA CURRENT ACCOUNT (JUN) BANK OF ENGLAND INTEREST RATE DECISION BANK OF ENGLAND QUANTITATIVE EASING US INITIAL JOBLESS CLAIMS
070820	CHINA TRADE BALANCE (JUL) GERMAN TRADE BALANCE (JUN) FRANCE TRADE BALANCE (JUN) US NONFARM PAYROLS (JUL)

CORPORATE ACTION :

DEVIDEN

040820	UNVR RP 107 (CUM 0408, PAYMENT 1908) SMSM RP 19 (CUM 0408, PAYMENT 2508) AKRA RP 50 (CUM 0408, PAYMENT 1308)
050820	PGLI RP 1 (CUM 0508, PAYMENT 2608) ABDA RP 60 (CUM 0508, PAYMENT 2608)
060820	XCID RP 0.7984 (CUM 060820, PAYMENT 2408) SRSN RP 2 (CUM 0608, PAYMENT 2808) INTP RP 500 (CUM 0608, PAYMENT 2808)

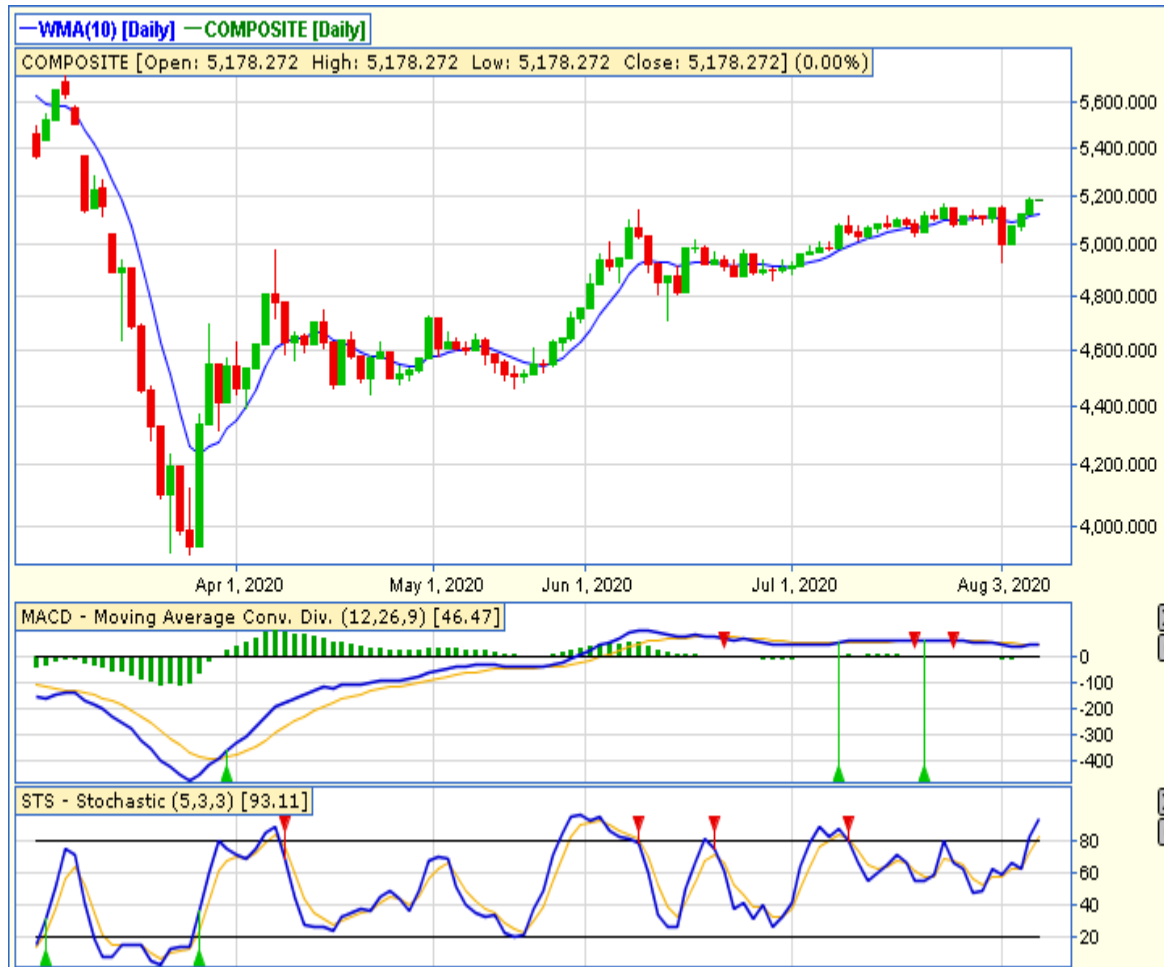
RUPS

30820	TOTO INDX BLUE APII
040820	WTON KIOS IPCC
050820	TPIA SMBR PURA PGJO MTPS INDO FPRZ DFAM DEAL CLAY BCIP APEX ANDI ACES
060820	RUIS MTLA BRPT BAPA AMFG
070920	SINI RODA RMBA REAL PEGE PANI MLIA LPGI BSMR AMAN

IPO

RIGTH ISSUE

JAKARTA COMPOSITE INDEX



PREVIOUS 6 AGUSTUS 2020

CLOSING	5178.272	+0.999%
TRANSACTION	IDR 11.093 TRILLION	
FOREIGN NETT	IDR 9.47 BIO (SELL)	

PREDICTION 7 AGUSTUS 2020

BEARISH (TECHNICAL CORECTION)
RANGE 5059-5187

THREE WHITE SOLDIERS
STOCHASTIC : OVERBOUGHT
MACD : HISTOGRAM NEGATIF MENGECIL DAN BERSIAP
GOLDEN CROSS

TECHNICAL RECOMENDATION



MEDC – PT MEDCO ENERGI INTERNASIONAL TBK

CLOSING 6/8/2020 RP 470 (+4%)

BUY

TARGET PRICE 540

STOPLOSS < 456

MORNING STAR

STOCHASTIC : UPTREND

MACD : HISTOGRAM NEGATIF MENGECIL DAN BERSIAP GOLDEN CROSS

TECHNICAL RECOMENDATION



GIAA – PT GARUDA INDONESIA (PERSERO) TBK

CLOSING 6/8/2020 RP 258 (+7.5%)

**SELL ON STRENGTH
TAKE PROFIT 284**

**BREAK OUT FALLING WEDGE
STOCHASTIC : UPTREND
MACD : HISTOGRAM NEGATIF MENGECIL DAN
BERSIAP GOLDEN CROSS**

TECHNICAL RECOMENDATION



BRPT – PT BARITO PACIFIC TBK

CLOSING 6/8/2020 RP920 (+.2%)

BUY

TARGET PRICE 980

STOPLOSS < 900

MORNING DOJI STAR

STOCHASTIC : GOLDEN CROSS

MACD : HISTOGRAM NEGATIF MENGECIL DAN
BERSIAP GOLDEN CROSS

TECHNICAL RECOMENDATION



RALS – PT RAMAYANA LESTARI SENTOSA TBK

CLOSING 6/8/2020 Rp 580 (+7.4%)

BUY

TARGET PRICE 675

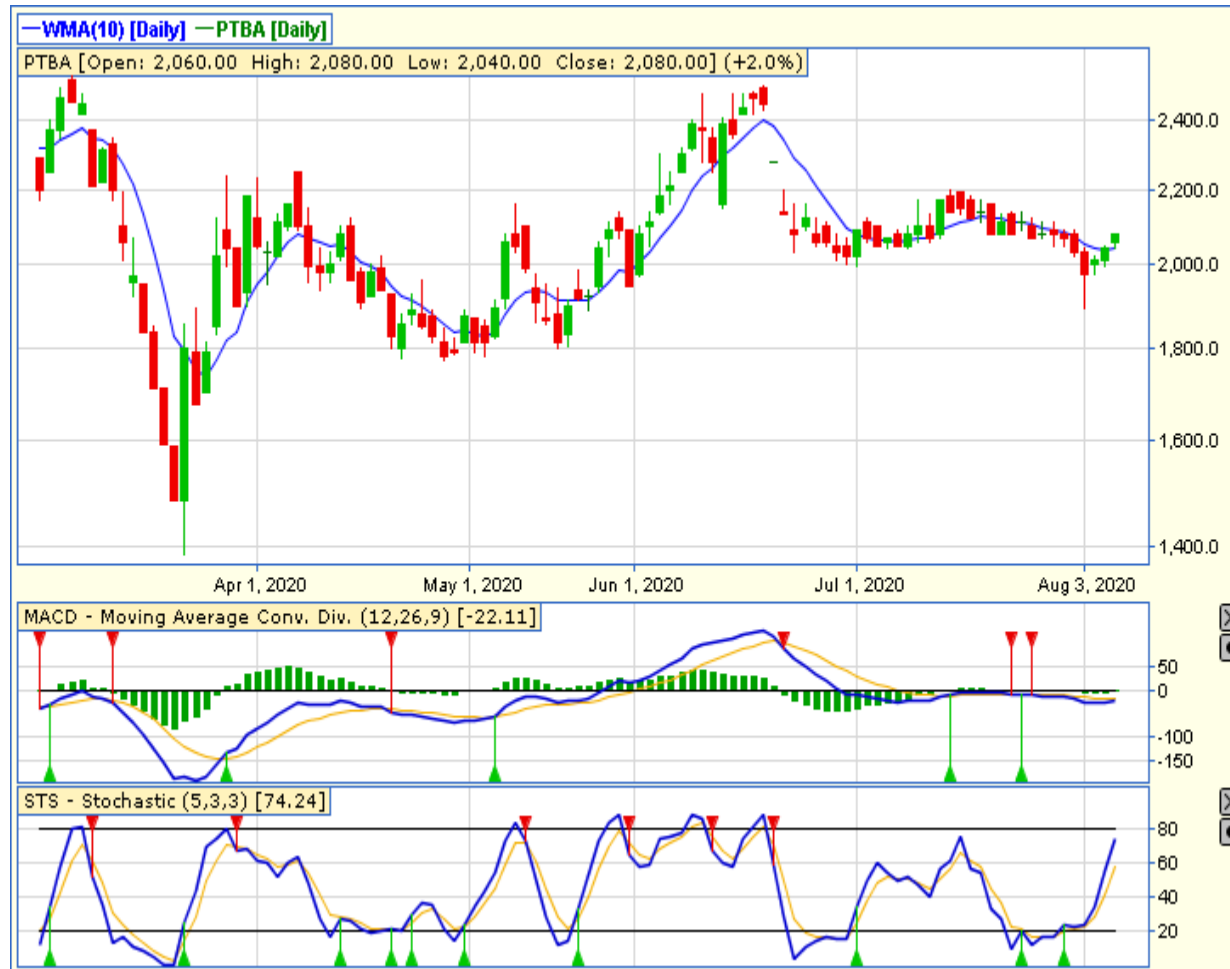
STOPLOSS < 550

THREE WHITE SOLDIERS

STOCHASTIC : UPTREND

MACD : HISTOGRAM POSITIF DAN GOLDEN CROSS

TECHNICAL RECOMENDATION



PTBA – PT BUKIT ASAM TBK

CLOSING 6/8/2020 RP 2080 (+2%)

BUY

TARGET PRICE 1510

STOPLOSS < 2040

BREAK OUT FALLING WEDGE

STOCHASTIC : UPTREND

MACD : HISTOGRAM NEGATIF MENGECIL DAN BERSIAP GOLDEN CROSS

TECHNICAL RECOMENDATION



ANTM – PT ANEKA TAMBANG TBK

CLOSING 6/8/2020 RP 835 (+11.3

SELL ON STRENGTH
TAKE PROFIT 920

BREAK OUT RISING WEDGE
STOCHASTIC : UPTREND
MACD : HISTOGRAM POSITIF DAN UPTREND

RESEARCH TEAM



YULIANA

**RESEARCH ANALYST &
CORPORATE FINANCE**



DIMAS WP PRATAMA, CSA

TECHNICAL ANALYST

EQUITY CAPITAL MARKET TEAM



JESSIE JAMES

HEAD OF EQUITY SALES



PRASETYO NUGROHO

HEAD OF DEALING ROOM



GABRIELLA PRATIWY

HEAD OF ONLINE TRADING